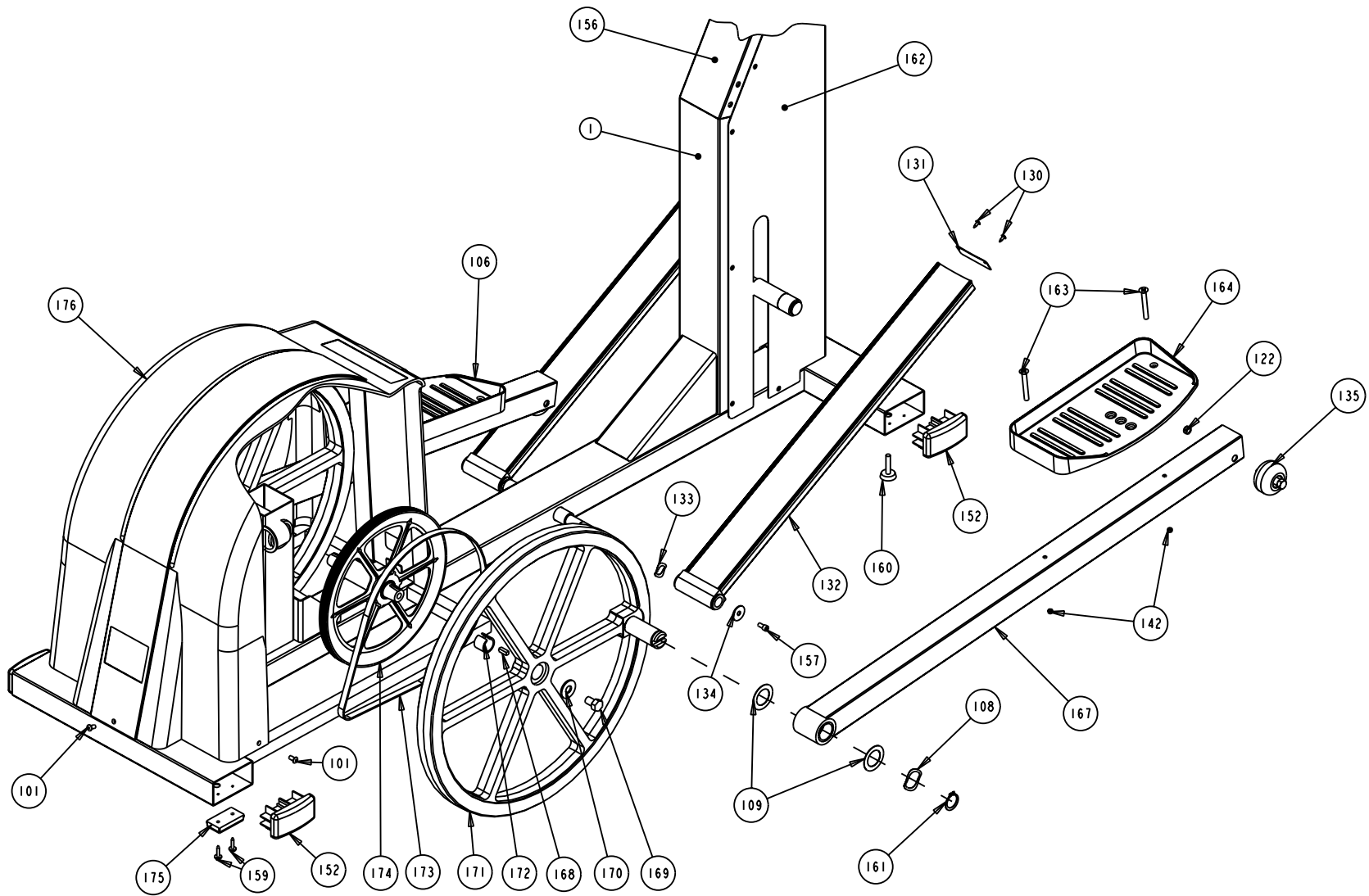
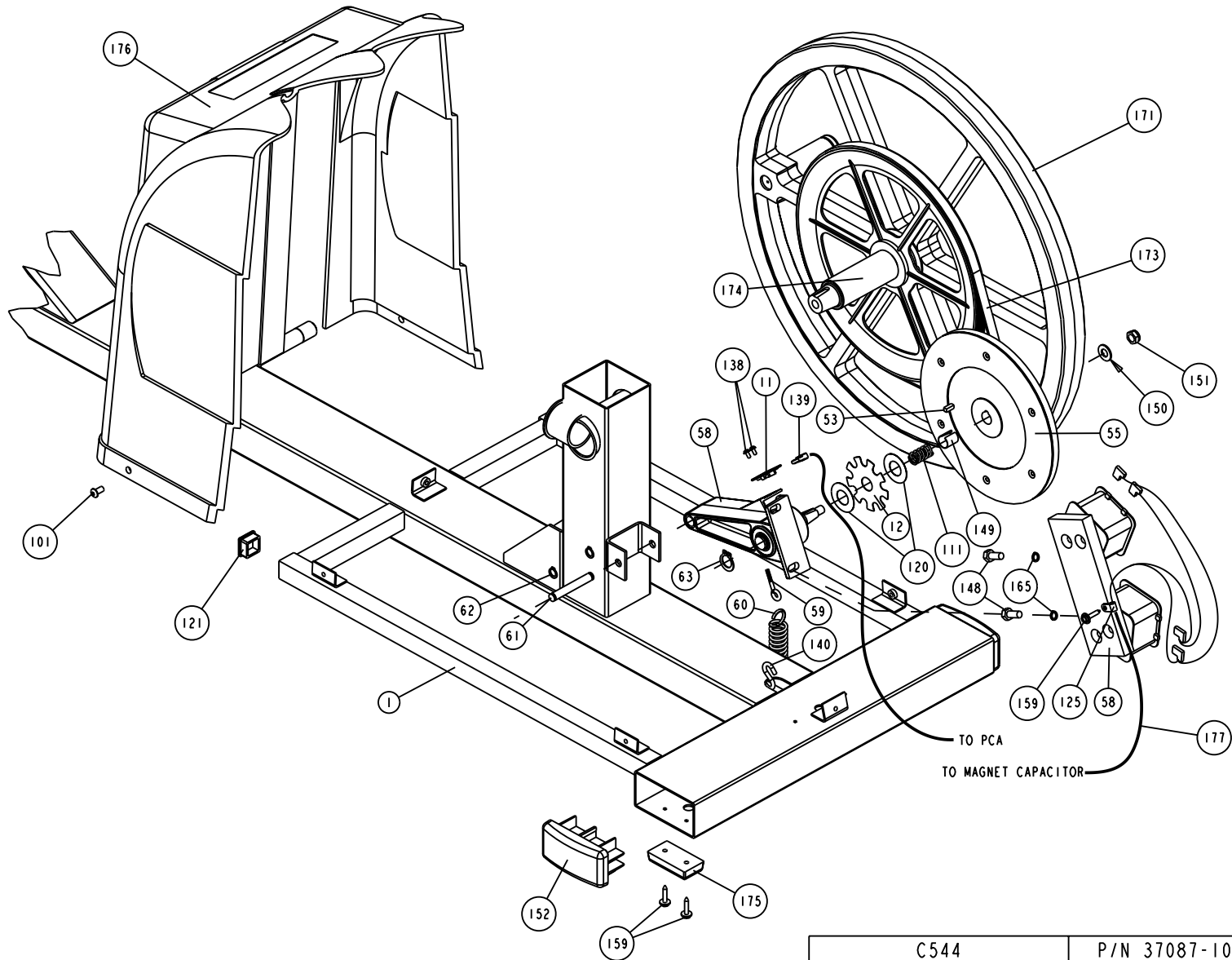


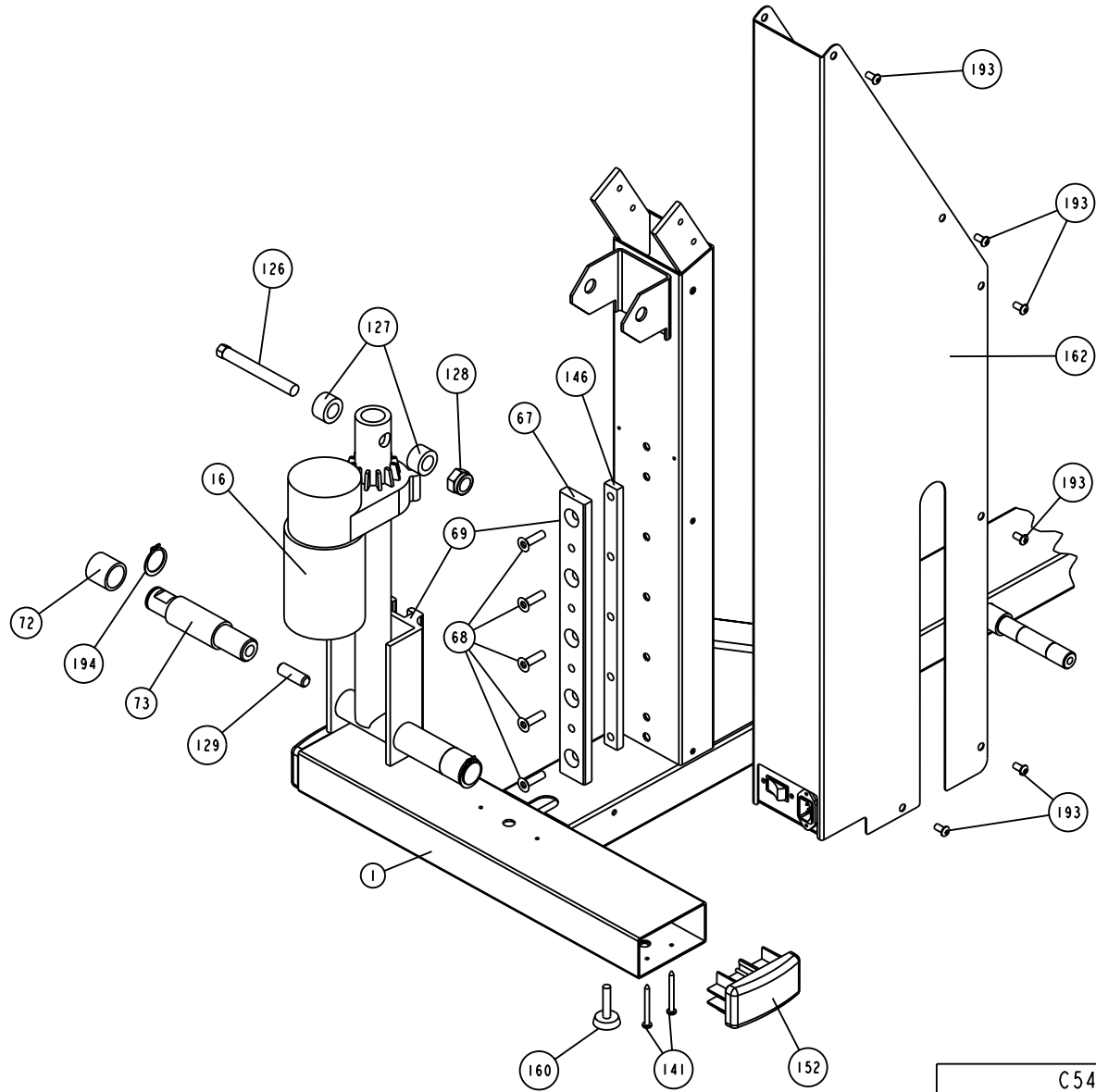
C544	P/N 37087-106	REV: AA
DRAWN BY: GRANADOSIN	DATE: 04.26.02	SHEET 1 OF 6



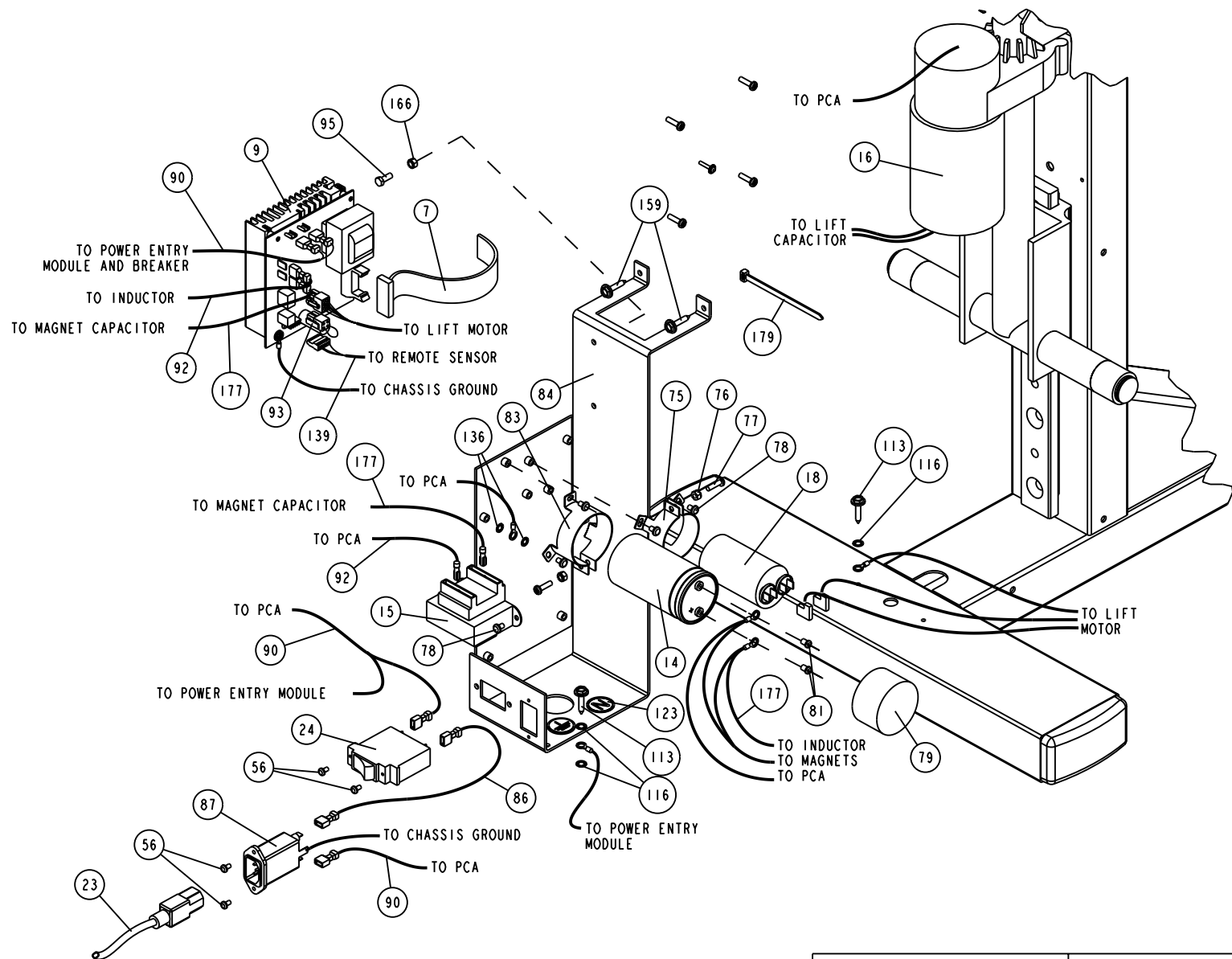
C544	P/N 37087-106	REV: AA
DRAWN BY: GRANADOSIN	DATE: 04.26.02	SHEET 2 OF 6



C544	P/N 37087-106	REV: AA
DRAWN BY: GRANADOSIN	DATE: 04.26.02	SHEET 3 OF 6



C544	P/N 37087-106	REV: AA
DRAWN BY: GRANADOSIN	DATE: 04.26.02	SHEET 4 OF 6



C544-120	P/N 37087-106	REV: AA
DRAWN BY: GRANADOSIN	DATE: 04.26.02	SHEET 5 OF 6



Part Number	Description	Bubble Number	
50536 - 103	ASSY,FRAME,C544	1	
38676 - 105	PCA, DISPLAY, SFT, CSAFE	4	
43555 - 103	ASSY,PCA&SW,C544,UPR	4A	
37506 - 306	PROM, PGMD, EFX 544, VER 3.06	5	
50514 - 105	ASSY, DISPLAY HOUSING W/O	6	
37012 - 101	CABLE, DISPLAY, C544	7	
37180 - 102	ASSY, LWR ELECT. MODULE	9	
37503 - 101	PCA, REMOTE SENSOR	11	
36814 - 103	LABEL, SPEED	12	
10035 - 108	CAP,EL,2200UF,200V,2.02"X3.69"	14	
11187 - 101	INDUCTOR,6.7MH,20%,2A RMS	15	
36851 - 102	ACTUATOR, LIFT	16	
11226 - 101	CAP,MOTOR START,18-22UF,330VAC	18	
50515 - 101	ASSY, HANDLEBAR, LEFT, C544	21	
50516 - 101	ASSY, HANDLEBAR, RIGHT, C544	22	
10392 - 111	CORD,POWER,125VAC,10A,8.0 FT	23	
10703 - 102	CKT BRKR,250V,3AMP,MAGNETIC,ROCKER,	24	
10123 - 102	CABLE TIE,3-7/8 LONG,WHITE,NYL	46	
MGKN016 - 038	SCREW,MCH,8-32X3/8,PANHD,PHIL,	51	
10220 - 106	KEY, SQUARE, 3/16 X .50 LONG	53	
MGKN013 - 025	SCREW,MCH,6-32X1/4,PANHD,PHIL,	56	
50529 - 107	ASSY, MAGNET, PIVOT, EDDY	58	
BEKN019 - 100	BOLT, CLOSED EYE, #10-24 X 1.6	59	
11363 - 101	SPRING,EXT, .75 DIA X 3.00 LONG	60	
36825 - 101	PIN, PIVOT	61	
50530 - 104	KIT, LIFT GUIDE REPLACEMENT	67	
MACKN032 - 125	SCREW,MCH,5/16-18X1-1/4,FLTHD,HEX	68	
50548 - 101	ASSY, LIFT GUIDE/BRACKET	69	
CAKN025 - 050	SCREW,SKHD,1/4-20X0.50,BLK ZN,LK	71	
37041 - 102	WEAR TUBE, LIFT AXLE	72	
50533 - 104	ASSY, LOWER, LIFT SHAFT	73	
10036 - 104	CLAMP,CAPACITOR,1.75"DIA	75	
KGCN016 - 013	LOCKNUT, STARWASHER 8-32, HEX	76	
MGCN016 - 063	SCREW,MCH,8-32X5/8,PANHD,PHIL,	77	
MGCN016 - 025	SCREW,MCH,8-32X1/4,PANHD,PHIL,	78	
36790 - 102	COVER, FRONT, ELECT, PAINTED	80	
MHCN019 - 025	SCREW,MCH,10-32X1/4,PANHD,PHIL	81	
10036 - 101	CLAMP,CAPACITOR,2.0"NOM	83	
36794 - 104	BRACKET, LOWER ELEC, PAINTED	84	
37532 - 101	ASSY, POWER ENTRY MODULE, 120V	87	
36837 - 101	ASSY, CABLE, INPUT FILTER TO	90	
37256 - 101	ASSY, WIRE, RED, INDUCTOR	92	
36853 - 101	ASSY, LIFT JUMPER, C544	93	
MAACN019 - 075	SCREW,MCH,10-32X3/4,HEX,ZN	95	
TCNN025 - 050	SCREW,BTHD,1/4-20X1/2,SS	101	
WAGNN131 - 002	WASHER, WAVE, 1.516 OD X	108	
WAPNN125 - 003	WASHER, THRUST, 1.25 ID X	109	
10231 - 116	SPRING, COMPRESSION, .845 OD	111	
PHCN019 - 075	SCREW,S/T,#10X3/4,WSHRHXHD,ZN,	113	
WATNN020 - 002	WASHER, LK-INT, #10, ID=.200,	116	

50527 - 102	ASSY, READING RACK, EFX	117	
WNNN075 - 002	WASHER, FLT,3/4X1.50X.015	120	
11240 - 101	CAP, END, PLASTIC, SQUARE, 1	121	
KADN031 - 016	LOCKNUT,HALF,5/16-18,CAD PLT	122	
37436 - 101	LABEL, CHASIS NEUTRAL	123	
11104 - 101	CLAMP, CABLE, PLASTIC	125	
50535 - 101	ASSY, BOLT, LIFT MOUNTING	126	
37674 - 101	SPACER,LIFT,PLASTIC	127	
KACN063 - 027	LOCKNUT,HALF,5/8-11,ZN	128	
10496 - 106	ROD,THREADED,1/2-13,1.50LENGTH	129	
PGKN016 - 050	SCREW,S/T,#8X1/2,TRS,PHIL,BLK	130	
37549 - 101	ENDCAP	131	
50534 - 102	ASSY, RAMP WITH END CAPS	132	
WAGSN072 - 001	WASHER, WAVE .105 O.D., .755	133	
WPNN032 - 006	WASHER, STAINLESS STEEL,	134	
50532 - 108	ASSY, WHEEL	135	
WATNN017 - 002	WASHER, LK-INT, #8, ID=.170,	136	
DGCN013 - 031	SCREW, PAN HEAD, CONE WASHER,	138	
37537 - 102	ASSY, CABLE, REMOTE SENSOR,	139	
11283 - 101	HOOK,"S"	140	
PJCN019 - 200	SCREW,10X 2 X 2.0 HEX WA HD,	141	
37813 - 102	GASKET, MID-JOINT	144	
37881 - 101	PLATE,SPACER,LIFT GUIDE	146	
37278 - 101	GUARD, UPRIGHT COLUMN	147	
HCRN031 - 075	SCREW,HEX,GR 5,5/16-18X3/4,SIL ZN	148	
37854 - 101	BUSHING, TAPERED	149	
WBNN038 - 007	WASHER, FLT, 3/8, ID=.406,	150	
KBDN038 - 015	LOCKNUT,HALF,3/8-24,CAD PLT	151	
34063 - 101	ENDCAP	152	
37499 - 102	CLAMP, HANDLEBAR,BLACK, PT	153	
CCNE025 - 150	SCREW,SKHD,1/4-20X1.50,SS,LK	154	
50553 - 101	ASSY,CSAFE DISPLAY PLATE,C544	155	
50522 - 103	ASSY, FRONT COLUMN W/LABEL,EFX	156	
CCNE031 - 050	SCREW,SKHD,5/16-18X0.50,SS,LK	157	
WENN031 - 007	WASHER, FLT, 5/16X.688X.065,SS	158	
PKKN019 - 075	SCREW,S/T,#10X3/4,WSHRHXHD,BLK	159	
11211 - 102	LEVELER, 3/8-16 X 1.50	160	
10133 - 115	RING,RETAINER,EXTERNAL,TREADS	161	
50523 - 106	ASSY, FRONT COVER W/LABELS,	162	
MRNN025 - 250	SCREW, MCH, 1/4-20X2-1/2,FLTHD,HEX	163	
37161 - 201	PEDAL, FOOT, PAINTED, C544	164	
WALCN031 - 008	WASHER, 5/16 SPLIT LOCK, ZINC	165	
KHCN019 - 013	LOCKNUT, STARWASHER, 10-32,	166	
37283 - 104	ASSY,STAIR ARM	167	
10220 - 108	KEY, 1/4 SQ X 3/4 , CRS	168	
HECE050 - 075	SCREW,1/2-13 X 3/4,HEX 7/8,	169	
WTCN050 - 010	WASHER,GRADE 8,1/2,I.D.9/16,	170	
50528 - 106	ASSY, FLYWHEEL, C544	171	
37828 - 101	BUSHING, TAPER	172	
10217 - 120	BELT, POLY-V, 42 , 420J6	173	
50517 - 108	ASSY, PULLEY W/SHAFT, C544	174	